

Figure1: Epilimnetic phytoplankton density in Big Platte Lake, MI during 2003 (A), 2004 (B) and 2005 (C). Note change of scale in 2005.

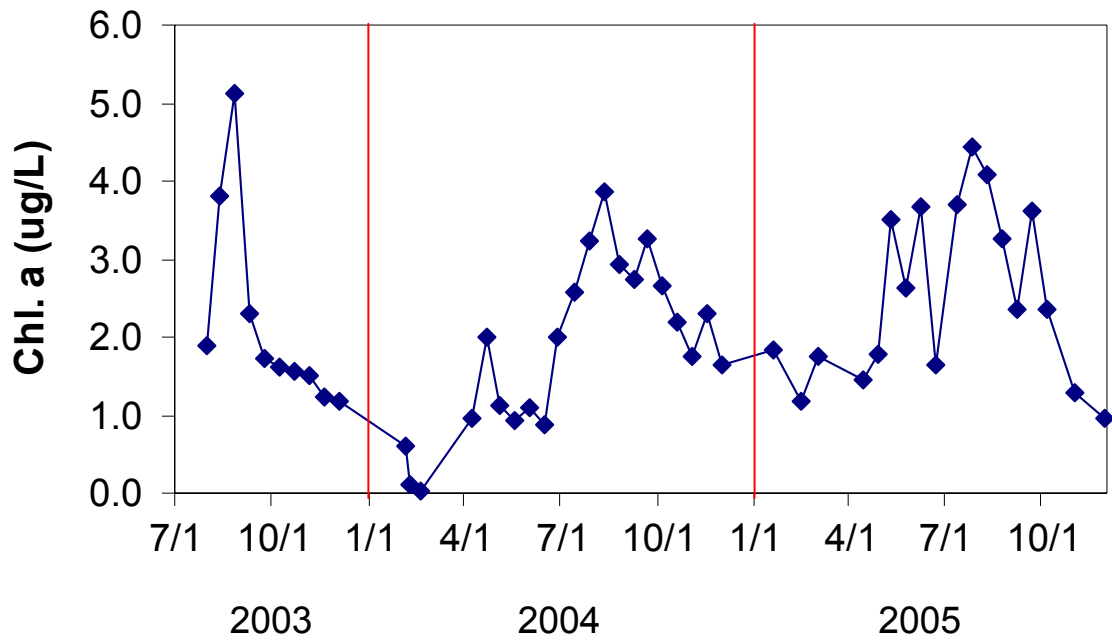


Figure2: Epilimnetic chlorophyll a concentration in Big Platte Lake, MI 2003-2005. Mean concentrations in 2003, 2004, and 2005 were 2.19, 1.85, and 2.53 $\mu\text{g/L}$, respectively.

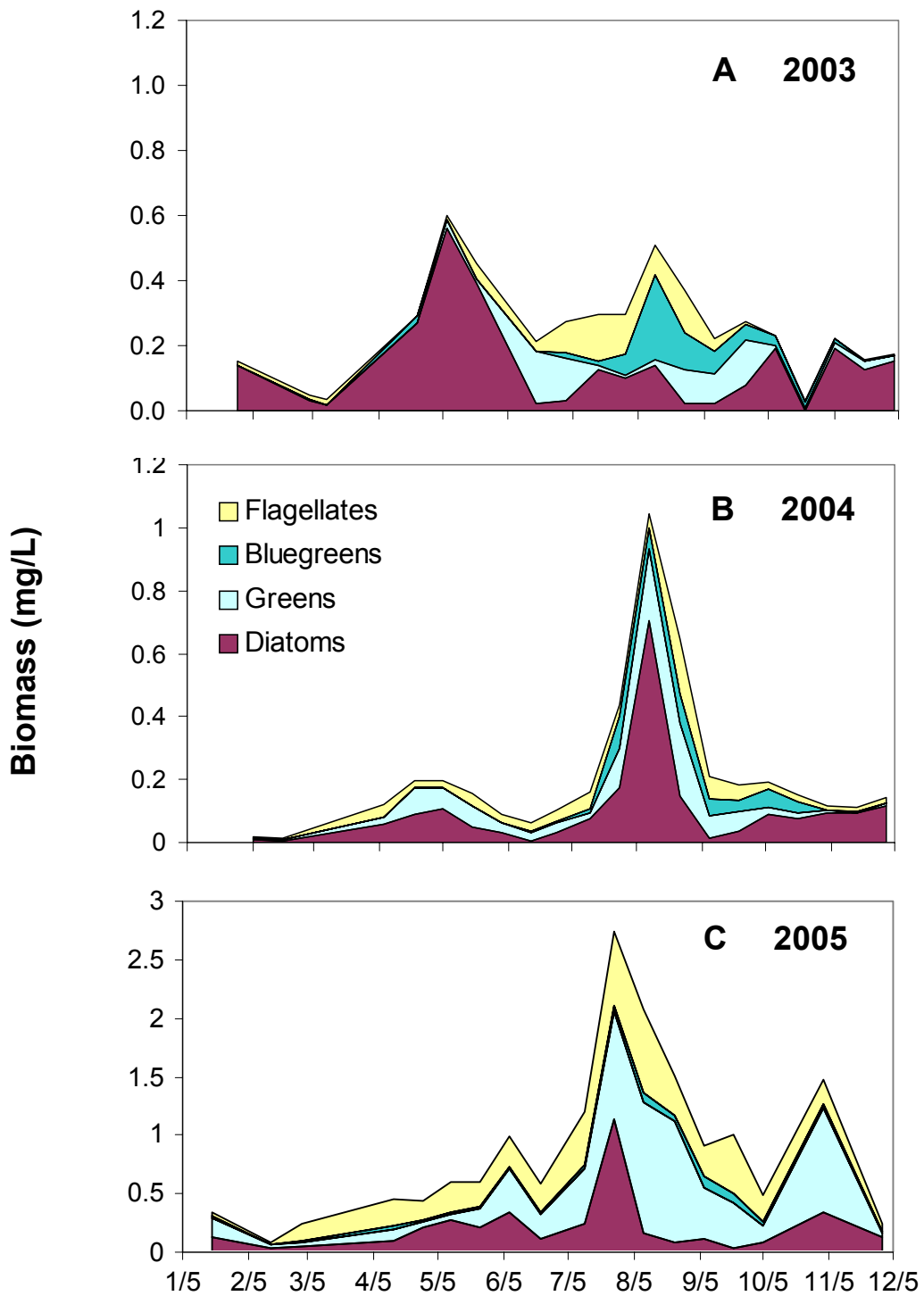


Figure 3: Epilimnetic phytoplankton biomass (wet wt.) in Big Platte Lake, MI during 2003 (A), 2004 (B), and 2005 (C). Note change of scale in 2005.

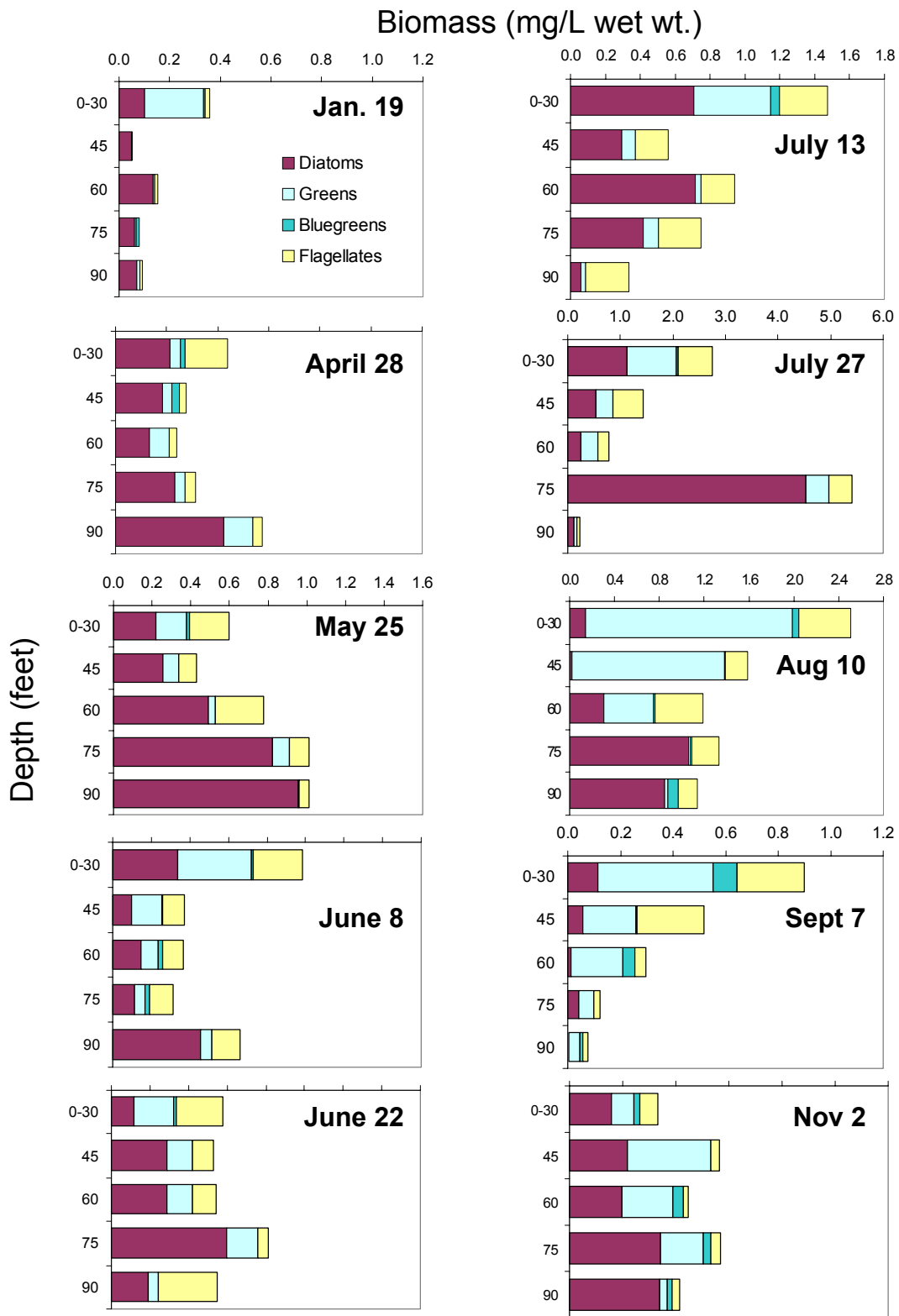


Figure 4: Phytoplankton biomass with depth in Big Platte Lake, MI, 2005. Note change of biomass scale in May, July and August.

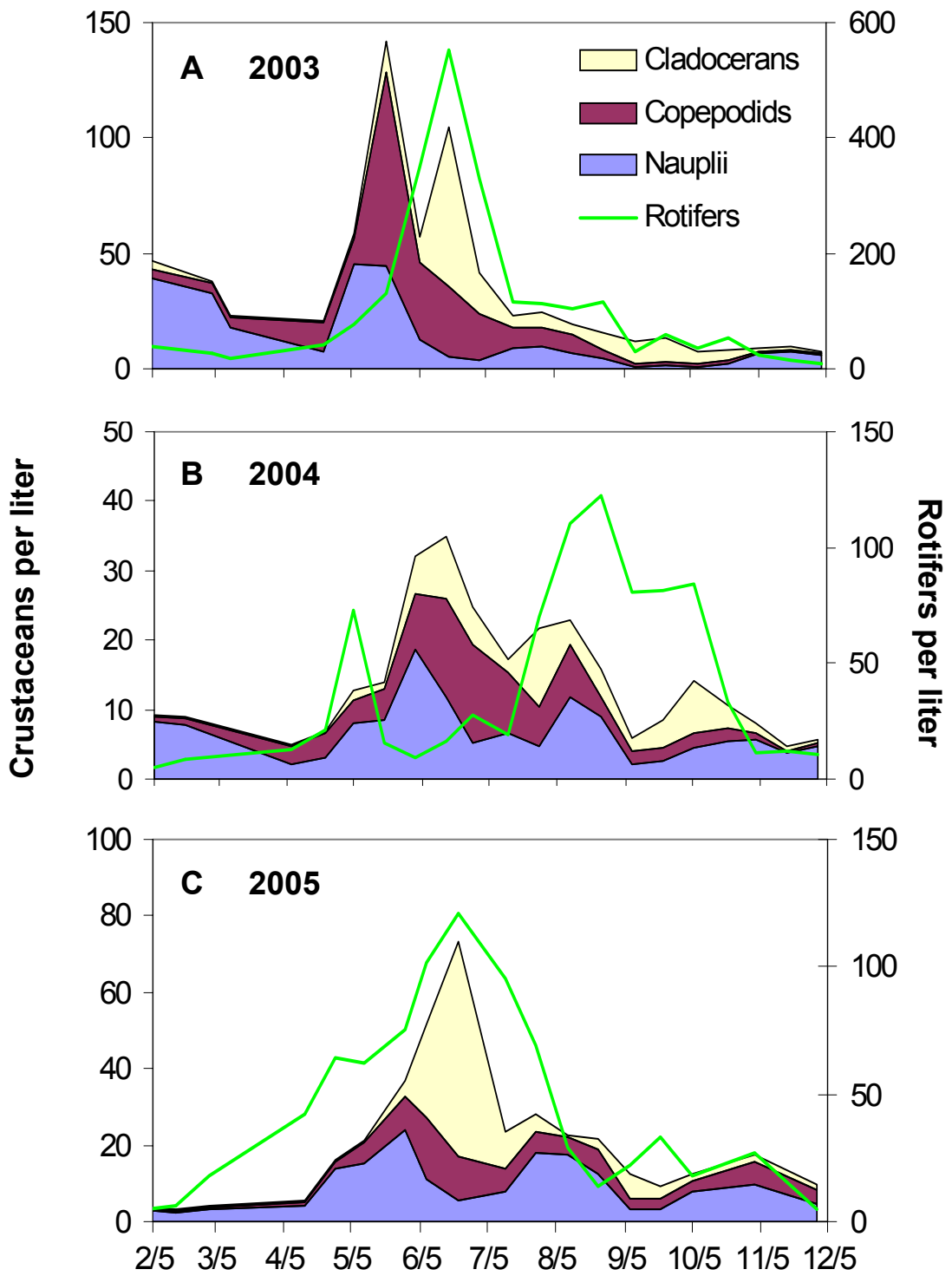


Figure 5: Average zooplankton density in Big Platte Lake, MI during 2003 (A), 2004 (B), and 2005 (C). Note change in scales.

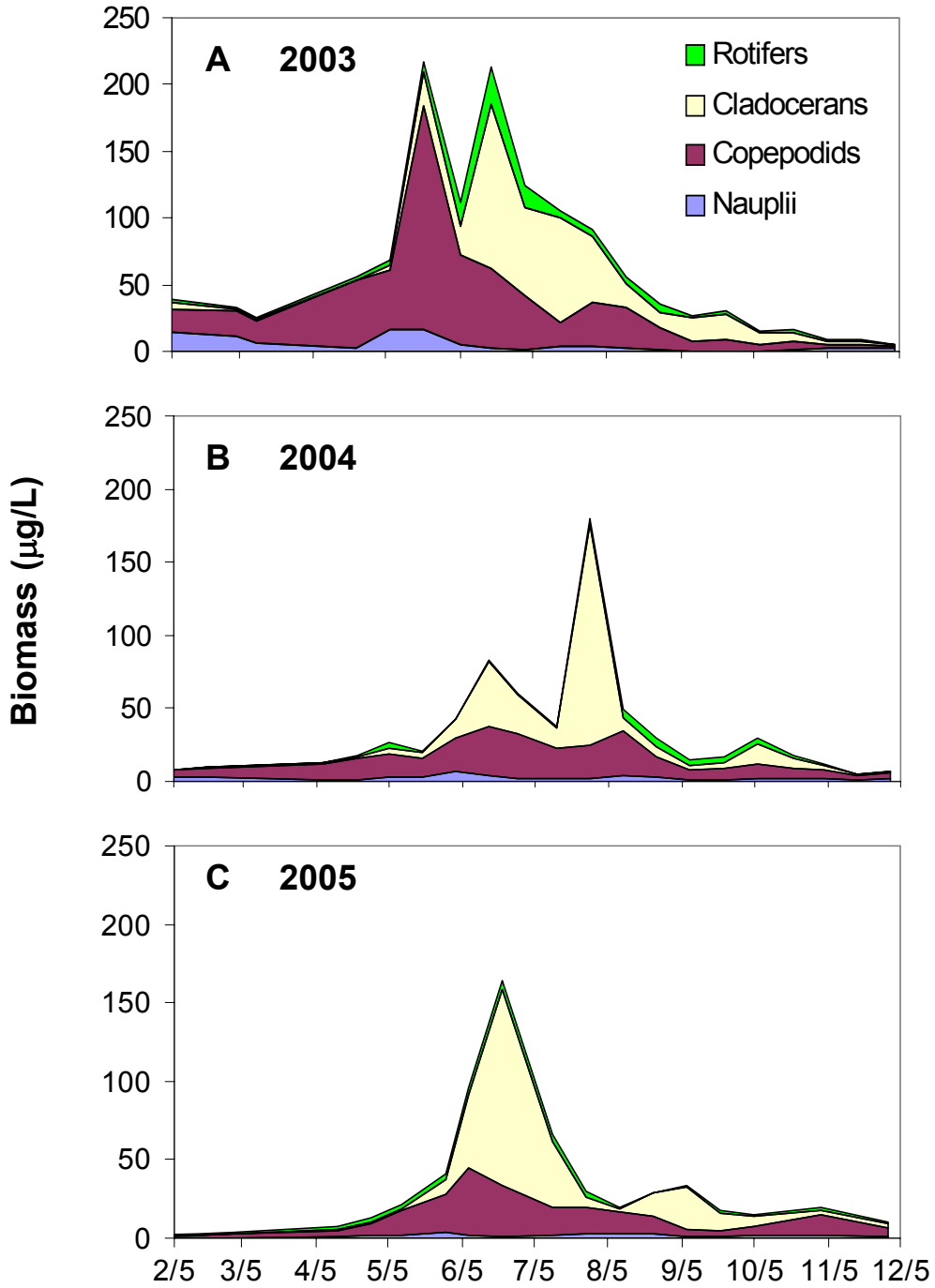


Figure 6: Average zooplankton biomass (dry wt.) in Big Platte Lake, MI during 2003 (A), 2004 (B), and 2005 (C).

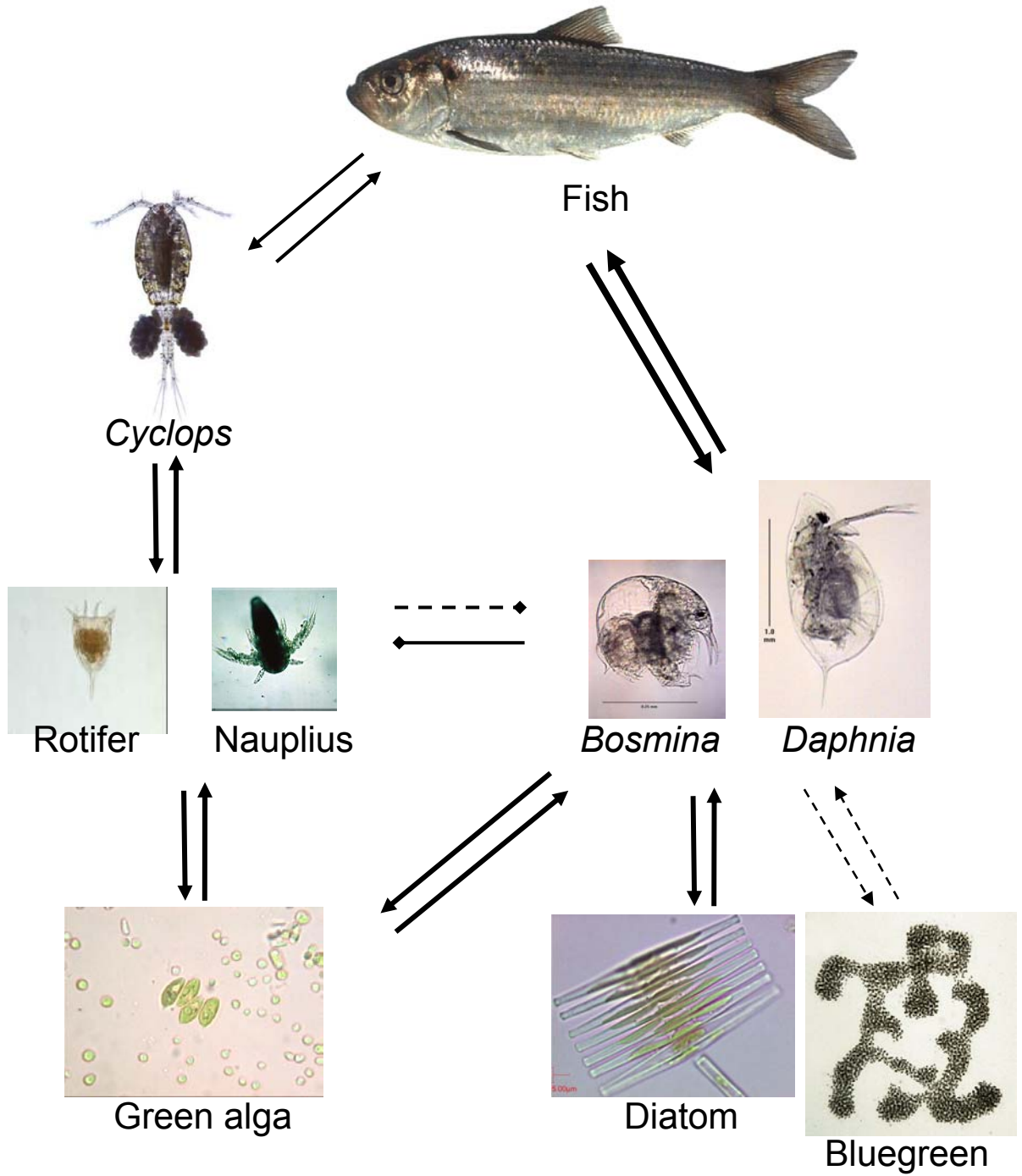


Figure 7: Platte Lake Food Web. Sharp arrow heads indicate direct feeding relationship (positive/negative interaction). Blunt arrow heads indicate indirect competition (negative/negative interaction). Thickness of arrow is proportional to strength of the interaction.